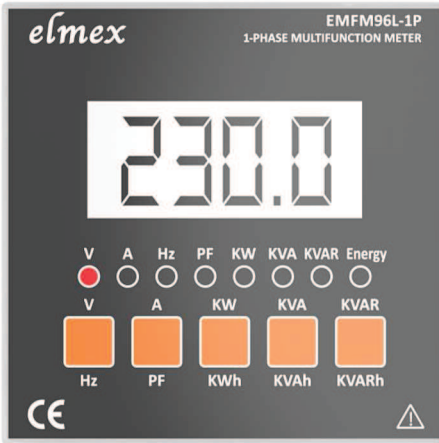




# EMFM96L-1P

## 1-Phase Multifunction Meter



### FEATURES

- TRMS Measurement
- 10 Parameter on 10 Display Pages
- POWER MASTER Software (Optional)
- RS485 Port, 5KV Isolated with MODBUS RTU Protocol (Optional)
- User Programmable CTR (1.00 - 99.99) for (1A / 5A)
- Auto Scroll / Manual Scroll Display (User Selectable)
- Ideal for Testing of Electrical Appliances



### SPECIFICATIONS

<b>Display</b>	4 Digit LCD Display with Backlight and LED Indicator for Parameter Indication
<b>Digit Height</b>	0.78" / 20mm
<b>Connection</b>	1 Ph 2W
<b>Dimensions (mm)</b>	96 x 96 x 55
<b>Panel Cut Out</b>	92 <sup>(+0.8,-0.0)</sup> x 92 <sup>(+0.8,-0.0)</sup> , 43mm Depth (Behind Bezel / Panel)
<b>Terminals / Connectors</b>	Tin Plated Brass Terminals and Screws
<b>Case / Housing Material</b>	DIN Grey ABS, Dimension as per DIN 43700
<b>Mounting</b>	Panel Mounting
<b>Mounting Clamps</b>	Sturdy, Moulded Delrin
<b>Dielectric Strength</b>	2.5kV at 50Hz for 1min.
<b>Insulation Resistance</b>	>20MΩ at 500V DC
<b>Installation Category</b>	Cat III (IEC/EN 61010-1)
<b>Pollution</b>	Degree 2 (IEC/EN 61010-1)
<b>Auxiliary Supply</b>	SMPS 85-265V AC / DC

### SPECIFICATIONS

<b>RMS Current</b>	0.025A to 1.2A (Max.) 0.125A to 6A (Max.)	Any One
<b>RMS Voltage</b>	50 - 300 Vrms	
<b>Frequency</b>	45 - 55Hz	
<b>Power Factor</b>	0.3 (Lag) - 1 - 0.3 (Lead)	
<b>Active Power</b>	0.030 - 1.800 KW (5 A) 0.006 - 0.360 KW (1 A)	
<b>Reactive Power</b>	0.030 - 1.800 KVAR (5 A) 0.006 - 0.360 KVAR (1 A)	
<b>Apparent Power</b>	0.030 - 1.800 KVA (5 A) 0.006 - 0.360 KVA (1 A)	

### Parameters Measured

### Accuracy

RMS Voltage	± (0.5% FS + 1 digit)
RMS Current	± (0.5% FS + 1 digit)
Active Power	±(0.5% FS +1 digit) [Cos φ = 0.3 to 1.000]
Reactive Power	±(1% FS +1 digit) [Sin φ = 0.3 to 1.000]
Apparent Power	±(0.5% FS +1 digit)

### Parameters Measured

### Accuracy

Power Factor	± (0.01 PF + 1 digit)
Frequency	± 0.1 Hz
Active Energy (KWh)	Class 1
Apparent Energy (KVAh)	Class 1
Reactive Energy (KVARh)	Class 1

Ordering Information : Model, Input Current (1A or 5A any one only) & RS485 Port (Optional), RS485-RS232 Converter (Optional)

### TERMINAL CONNECTION

